

The Farmville Cottage

at Peartree Farms



The Farmville Cottage - 2 car w/ MIL suite

5 Bed - 4 Bath

3,504 sqft

Exterior:

High Quality Exterior
 Low Maintenance Hardie Lap, Board & Batten and
 Masonry Brick
 30-Year Dimensional Architectural Roof Shingles &
 Metal Roof
 Covered Back Porch
 Single Hung, Double Pane High Efficiency Low E
 Glass Vinyl Windows
 \$15,000 Landscaping Budget
 2 Car Garage
 8x8 Rough Sawn Porch Columns

Building Standards:

Slab on Grade Concrete Foundation
 Traditional Stick Framing Methods
 Framed "Green Corners" for higher Energy Efficiency

Interior Features:

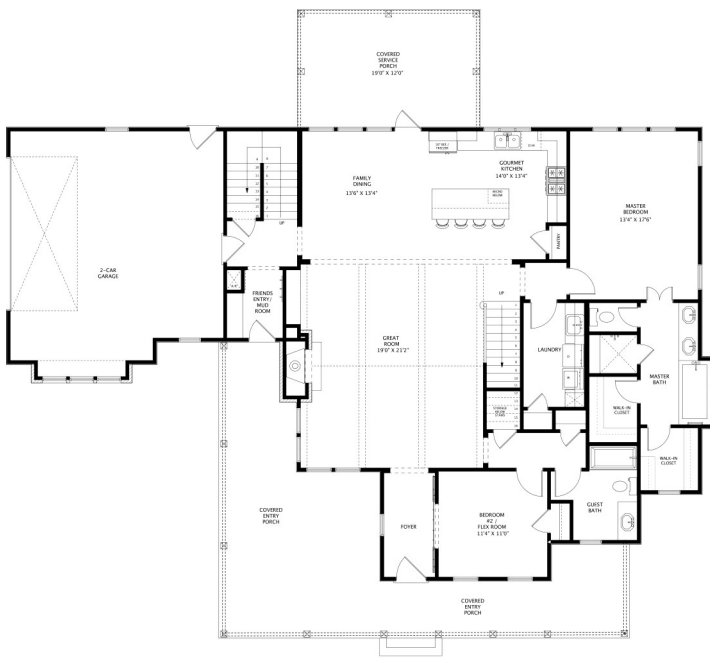
9' Ceilings throughout
 Traditional R13 Batt/Fiberglass Insulation
 Open Cell R20 Spray Foam Installed on Roof Deck
 High Efficiency 50 Gallon Electric Water Heater
 Energy Efficiency 14 SEER Electric Heat Pump

Upgraded Finish Options:

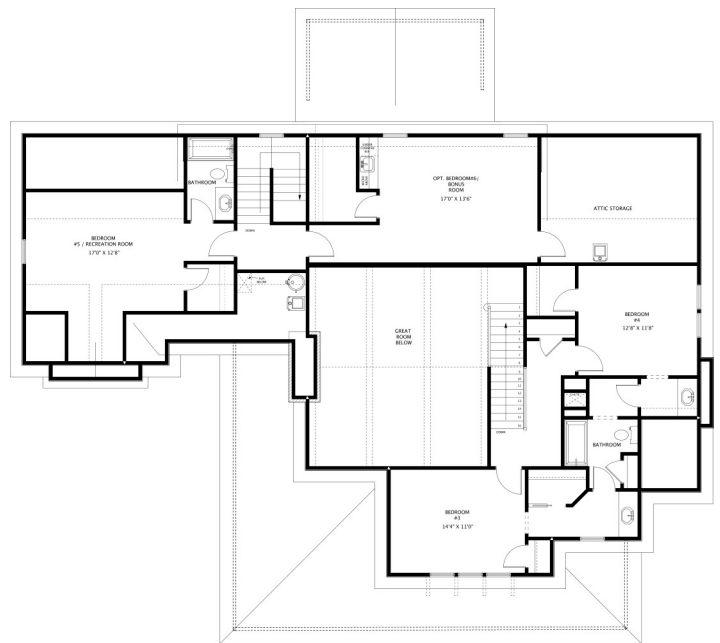
Farmhouse Sink	\$1,250
Under Cabinet Lighting	\$1,200
2" White Faux Wood Blinds throughout	\$69 per window/door
Window Screens (on all operable windows)	\$32 per window
Solid Core Doors throughout	\$1,700
Barn Door	\$500
Floor Outlet	\$500 per
USB Outlet	\$50 per
Surround Sound (Includes 5 ceiling speakers, 1 sub woofer (floor standing), 5 channel audio-video receiver/amplifier & 1 Control4 entertainment controller with remote)	\$3,250
Music Package (Includes 2 in ceiling speakers & 1 zone amp w/ wireless remote control via smart phone or tablet app, requires WiFi)	\$1,000 per room
10' Wide Gravel Driveway	\$1.85 per sq. ft.
Concrete Driveway	\$3.25 per sq. ft.
Culvert	\$1,250
Septic Tank Allowance	\$6,500
Basic Site Prep, non-wooded lots	\$2,750
Marble Countertops	Price Available Upon Request
Heated Tile Floors	Price Available Upon Request
Brick Accent Wall	Price Available Upon Request
Clearing Lot, non-wooded lots	Price Available Upon Request

Interior Finishes:

5" Hand Scraped Pre-Engineered Hardwood Flooring in the Common
 Areas on Main Floor
 Carpet in all Bedrooms
 Ceramic tile in all Full Bathrooms
 Custom Designed Wooden Cabinets in Kitchen & Bathrooms
 Granite countertops throughout
 Stainless Steel Appliances by Whirlpool®, including the Dishwasher,
 Glass Top Electric Range & Microwave
 Delta® Kitchen and Bath Fixtures
 Double Vanity in Master Bathroom with Under-mount sinks
 Vanity Mirrors
 Schluter Shower system with Delta fixtures & full tile surround with a
 semi-frameless glass shower door in Master Bathroom
 Soaking Garden Tub in Master Bathroom
 Low Maintenance High Quality Fiberglass Tub/ Shower in all other Full
 Bathrooms
 Recessed Lighting throughout Kitchen, Living Room, Dining, & Master
 Bedroom
 Wire Shelving installed in all Closets, Pantry, & Laundry Areas
 Interior walls primed & painted with Sherwin Williams® products. In-
 cludes two wall colors, one trim color, & one ceiling color
 6" Baseboards throughout
 Wood Burning Fireplace
 Double Barn door from foyer to office
 Shiplap above the mantle to the ceiling
 Judges paneling in foyer & office
 Two options for 5' tall brick surround Fireplace, including a 6x12
 cypress mantel with corbels or a shaker style mantel



Main Level



Upper Level

All Selections are to be made from the approved Legacy Collection options in the Holland Homes Showroom.

*Sitework, Driveway, Sewer/Septic System, Lot Costs & Utilities are not included



"Building Reputations"

www.HollandHomesllc.com

(334) 332-7157



PEARTREE
FARMS

THE ELEVATION AND FLOOR PLANS CONTAINED HEREIN ARE NOT TO SCALE AND ARE GRAPHIC ILLUSTRATIONS FOR MARKETING AND PRESENTATION PURPOSES ONLY. ACTUAL FLOOR PLANS AND ALL MATERIALS MAY VARY PRIOR TO OR DURING CONSTRUCTION. SOME FEATURES SHOWN MAY BE OPTIONAL. HOLLAND HOMES RESERVES THE RIGHT TO SUBSTITUTE MATERIALS AND COMPONENTS OF SIMILAR QUALITY, AND TO CHANGE FEATURES, OPTIONS, AND ARCHITECTURAL DETAILS WITHOUT PRIOR NOTICE. ACCORDINGLY, NEITHER THESE MATERIALS, NOR ANY COMMUNICATION MADE OR GIVEN IN CONNECTION WITH THESE MATERIALS, MAY BE DEEMED TO CONSTITUTE ANY REPRESENTATION OF WARRANTY, CONTRACT OR GUARANTEE OR MAY OTHERWISE BE RELIED UPON BY ANY PERSON OR ENTITY UNLESS CONVEYED IN WRITTEN FORM. THIS MARKETING INFORMATION AND PLAN ARE PROPERTY OF HOLLAND HOMES.