

# The Pruett

*at Peartree Farms*



The Pruett

4 Bed - 3.5 Bath

3007 sqft

**Exterior:**

High Quality Exterior  
 Low Maintenance Board & Batten Hardie Siding  
 30-Year Dimensional Architectural Roof Shingles & Standing Seam Metal Roofing  
 Vinyl, Single Hung, Double Pane High Efficiency Low E Glass and Argon filled Windows  
 \$15,000 Landscaping Budget  
 8x8 Rough Sawn cypress columns with Small Corbels on Front Porch  
 8x8 Rough Sawn Columns on Back Porch  
 2 Car Garage

**Building Standards:**

Slab on Grade Concrete Foundation  
 Traditional Stick Framing Methods  
 Framed "Green Corners" for higher Energy Efficiency

**Interior Features:**

10' Ceilings throughout  
 Traditional R13 Batt/Fiberglass Insulation  
 Open Cell R20 Spray Foam Installed on Roof Deck  
 High Efficiency 50 Gallon Electric Water Heater  
 Energy Efficient 14 SEER Electric Heat Pump

**Upgraded Finish Options:**

Farmhouse Sink	\$1,250
Under Cabinet Lighting	\$1,200
2" White Faux Wood Blinds throughout	\$69 per window/door
Window Screens (on all operable windows)	\$32 per window
Solid Core Doors throughout	\$1,700
Barn Door	\$500
Floor Outlet	\$500 per
USB Outlet	\$50 per
Surround Sound	\$3,250

(Includes 5 ceiling speakers, 1 sub woofer (floor standing), 5 channel audio-video receiver/amplifier & 1 Control4 entertainment controller with remote)

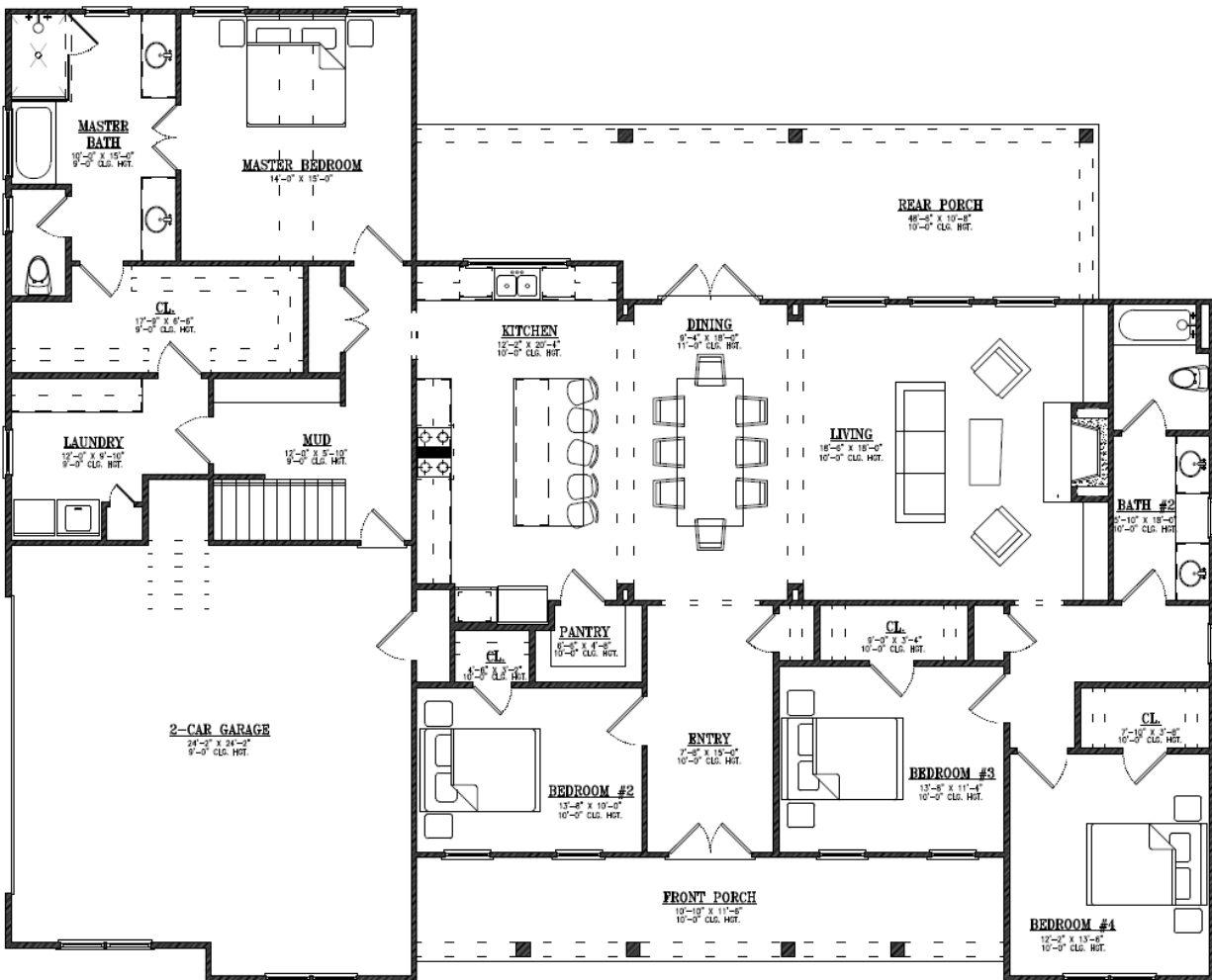
Music Package	\$1,000 per room
---------------	------------------

(Includes 2 in ceiling speakers & 1 zone amp w/ wireless remote control via smart phone or tablet app, requires WiFi)

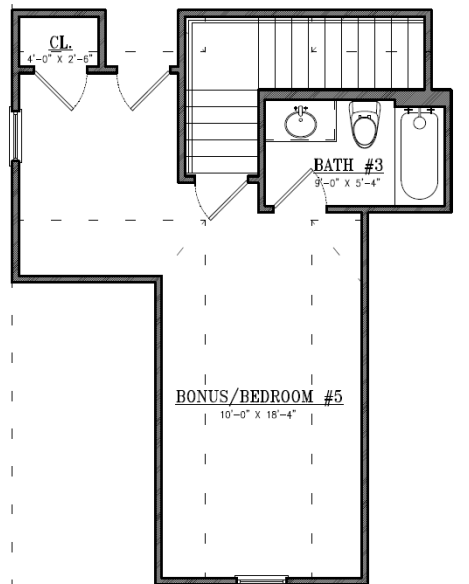
Marble Countertops	Price Available Upon Request
Heated Tile Floors	Price Available Upon Request
Brick Accent Wall	Price Available Upon Request

**Interior Finishes:**

5" Hand Scraped Pre-Engineered Hardwood Flooring in the Common Areas on Main Floor  
 Carpet in all Bedrooms & Upstairs Common Areas  
 Ceramic tile in all Full Bathrooms  
 Custom Designed Wooden Cabinets in Kitchen & Bathrooms  
 Granite countertops throughout  
 Stainless Steel Appliances by Whirlpool®, including the Dishwasher, Electric Range, Microwave and Wood Hood  
 Delta® Kitchen and Bath Fixtures  
 Double Vanity in Master Bathroom with Under-mount sinks  
 Vanity Mirrors  
 Schluter Shower system with Delta fixtures & full tile surround with a semi-frameless glass shower door in Master Bathroom  
 12x20 Niche in Master Shower  
 Freestanding Tub in Master Bathroom  
 Low Maintenance High Quality Fiberglass Tub/ Shower in all other Full Bathrooms  
 Recessed Lighting throughout Kitchen, Living Room, & Master Bedroom  
 Wire Shelving installed in all Closets, Pantry, & Laundry Areas  
 Interior walls primed & painted with Sherwin Williams® products. Includes two wall colors, one trim color, & one ceiling color  
 6" Baseboards throughout  
 Ventless Electric Fireplace  
 Shiplap above fireplace to ceiling  
 Judges Paneling will be installed In Foyer  
 Two options for a 5' tall brick surround and hearth will be installed with a cypress 6x12 mantel with corbels.



Main Level



Upper Level

All Selections are to be made from the approved Legacy Collection options in the Holland Homes Showroom.

\*Sitework, Driveway, Sewer/Septic System, Lot Costs & Utilities are not included



"Building Reputations"

[www.HollandHomesllc.com](http://www.HollandHomesllc.com)

**(334) 332-7157**



**PEARTREE**  
F A R M S

THE ELEVATION AND FLOOR PLANS CONTAINED HEREIN ARE NOT TO SCALE AND ARE GRAPHIC ILLUSTRATIONS FOR MARKETING AND PRESENTATION PURPOSES ONLY. ACTUAL FLOOR PLANS AND ALL MATERIALS MAY VARY PRIOR TO OR DURING CONSTRUCTION. SOME FEATURES SHOWN MAY BE OPTIONAL. HOLLAND HOMES RESERVES THE RIGHT TO SUBSTITUTE MATERIALS AND COMPONENTS OF SIMILAR QUALITY, AND TO CHANGE FEATURES, OPTIONS, AND ARCHITECTURAL DETAILS WITHOUT PRIOR NOTICE. ACCORDINGLY, NEITHER THESE MATERIALS, NOR ANY COMMUNICATION MADE OR GIVEN IN CONNECTION WITH THESE MATERIALS, MAY BE DEEMED TO CONSTITUTE ANY REPRESENTATION OF WARRANTY, CONTRACT OR GUARANTEE OR MAY OTHERWISE BE RELIED UPON BY ANY PERSON OR ENTITY UNLESS CONVEYED IN WRITTEN FORM. THIS MARKETING INFORMATION AND PLAN ARE PROPERTY OF HOLLAND HOMES.